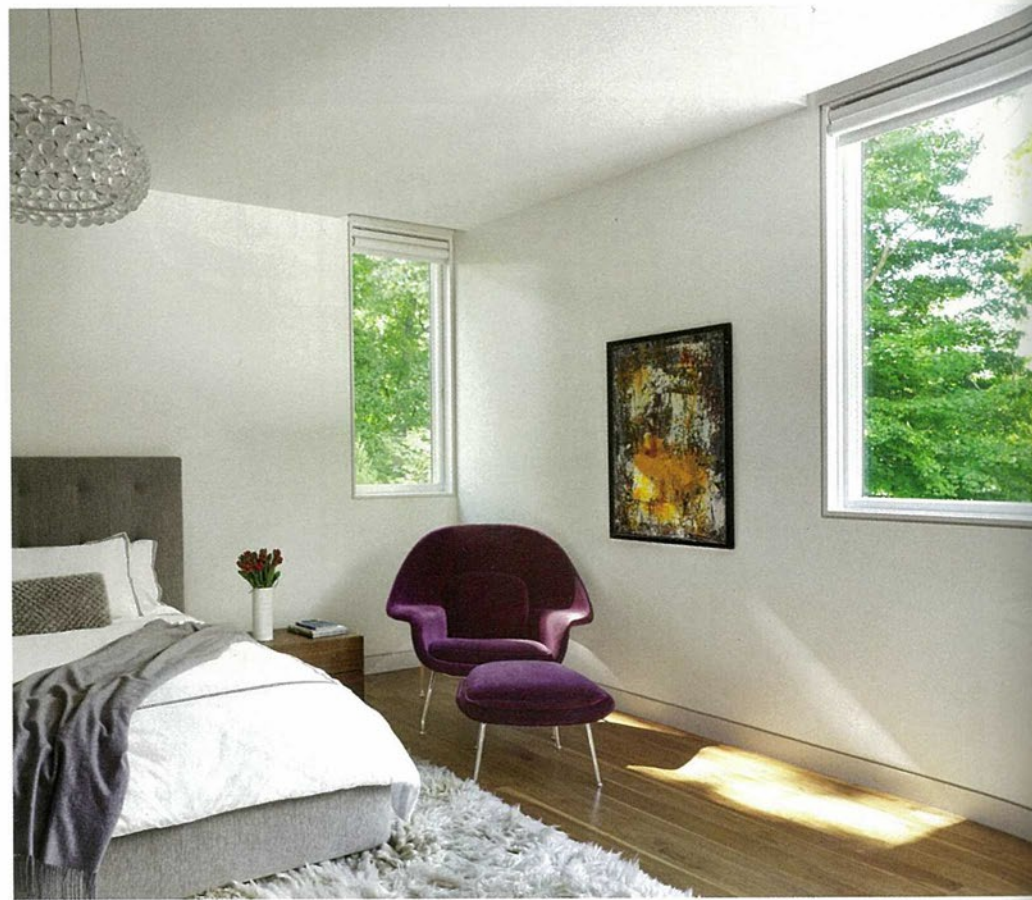




**“WE LEFT  
BLANK SPOTS  
THAT CAN BE  
TRANSFORMED  
OVER TIME”**

rods and floating walnut treads. “It brings light to the center of the house and down to the lower level, helping to integrate the kids’ playroom into the rest of the home,” he says. The wife enhanced Gartner’s elegant shell with streamlined furnishings, including reproductions of mid-20th-century designs like a Saarinen Tulip table, a Mies van der Rohe Barcelona chair, and an Eames lounge chair. “She likes to personalize her homes,” Gartner says, “so we left blank spots where she can continue to transform it over time. Our job was to provide a cohesive design that accommodates how the family wants to live and allows for enough evolution throughout the years so that the house will remain relevant into the future.”



**Boxed Sets**  
The backyard (THIS PAGE) boasts a gunite pool, a dining pavilion and outdoor kitchen, and multiple sitting areas. Walnut accents warm up the master bath (OPPOSITE TOP), where a tub from Wetstyle takes center stage. (OPPOSITE BOTTOM) A pendant light from Foscarini hangs above a Poliform bed in the master bedroom. See *Resources*.

