



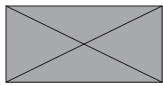
# installation guide

DC shower receptors

## BEFORE YOU BEGIN

Your choice is a testimonial to your excellent taste. Thank you for choosing from among WETSTYLE's quality line of products. We recommend that you carefully read this installation guide to ensure your shower receptor's proper operation and reliability for many years to come.

## TOOLS AND EQUIPMENT



Protective glasses



Drill and bits



Measuring tape



Paper pencil



Level



Cement, mastic or ceramic glue



Hammer



Pipe cutter



ABS pipe glue



Saw



1/4" Trowel



Silicone caulk



- THIS SHOWER RECEPTOR IS MADE OF A MIXTURE OF POLYESTER RESIN AND MINERAL DUST. DEPENDING ON THE MODEL, THE SHOWER RECEPTOR WEIGHT MAY VARY BETWEEN 20 AND 34 KILOS (45 AND 75 POUNDS). WE RECOMMEND THAT THE INSTALLATION BE DONE BY 2 PEOPLE, AS A SECURITY PRECAUTION. ALSO, MAKE SURE TO ADOPT THE PROPER POSTURE WHEN LIFTING THE TUB.
- ADHERE TO ALL LOCAL BUILDING AND PLUMBING CODES. THE DIAGRAMS IN THIS GUIDE ARE NOT CONSTRUCTION PLANS; THEY ARE VISUAL AIDS.

## SHOWER RECEPTORS INSTALLATION GUIDE

When installing the shower receptor against 1, 2, or 3 walls, the following instructions apply.

1. Determine the exact location of the shower receptor.
2. Install the rough plumbing, and check the location of the drain against your model.
3. Ensure that the sub-floor is level. The bottom of the shower receptor should be supported in a uniform and continuous manner on the ground.

- **wooden structure:** install a plywood sub-floor that is at least 3/4-inch thick.
- **cement structure:** if the ground is not level, use cement smoother.

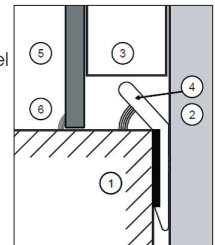
!

### **WARNING:** Risk of damage/Risk of cracking

- Make sure the wooden sub-floor is rigid, and that there is no give.
- Do not use shims to level the basin. It could crack under your weight.

4. Install the drain in the shower receptor.
5. Spread 1/4" of cement, mastic or ceramic glue on the floor to cover the dimension of the shower. Never use silicone; No voids.
6. Place the shower receptor in the predetermined location, ensuring that the tile flange is positioned against the existing wall structure. Install the gypsum or cement panels in such a way that they come into light contact with the tile flange.

1. Shower receptor
2. Existing vertical structure
3. Gypsum plasterboard panel
4. Tile flange
5. Finishing
6. Pressure seal



7. Connect the shower drain to the floor drain. Check the connection seals.
8. Complete the finishing of the walls. Ceramic tiles must be installed against the edge of the shower receptor. Use a silicone caulk to create a joint between the shower basin and the ceramic tiles.
9. Seal the joint between the bottom of the shower receptor and the floor using a silicone caulk. The caulk must penetrate under the shower receptor. This will prevent water from getting under the shower receptor.

## MAINTENANCE GUIDE

All WETSTYLE products are made of WETMAR BiO™, an ultra-smooth, nonporous material which resists staining and calcification.

WETMAR BiO™ makes maintenance easy: simply wiping with a soft cloth after each use will make stains disappear.

For routine maintenance of matte and True High Gloss™ finishes, we recommend household products such as Mr. Clean, Fantastik, CIF, etc. The matte finish is a slightly frosted surface which may require a more abrasive product.

Never use products (other than hygiene products and cosmetics) which contain petroleum distillates, such as paint thinners or other solvents. They may damage the WETMAR BiO™.

### Routine maintenance

#### WETMAR BiO™, True High Gloss™ finish:

Wipe with a soft cloth after each use. Use a mild cleanser such as Mr. Clean, Fantastik, CIF, etc. Do not use abrasives or cleaning creams.

#### WETMAR BiO™, matte finish:

Wipe with a soft cloth after each use.

Use a mild cleanser such as Mr. Clean, Fantastik, CIF, etc.

For stubborn stains, use a slightly abrasive cleaning cream (soft scrub) such as Comet Soft Cleanser, Cream with Bleach or CIF.

### Scatched or damaged surfaces

To repair scratched or damaged surfaces, sand with 600-, 800- and 1200-grain paper, in order, starting with the smallest number. Finish by polishing with a cloth and a white automotive rubbing compound.

### Repairs

For major repairs, send a photo of your WETSTYLE product to our customer service ([service@wetstyle.ca](mailto:service@wetstyle.ca)). We will suggest the most appropriate repair method.

## WARRANTY

WETSTYLE's warranty on **WETMAR BiO™ products** covers all defects in materials and manufacturing for a period of five years.

WETSTYLE's warranty on **furniture and accessories** products covers all defects in materials and manufacturing for a period of one year.

This limited warranty, starting on the original purchase date, is only offered to the original purchaser who acquires the product directly from WETSTYLE or from its authorized dealers.

This limited warranty does not apply to cases in which a product was incorrectly installed, nor to damage due to negligence, misuse, thermal shocks, cigarettes, flames, natural catastrophes or other accidents.

WETSTYLE is not responsible for costs and claims that may arise from purchase of a product unsuited to the structure of the existing building.

Any transformation or alteration made to a WETSTYLE product automatically voids the warranty.

The manufacturer's warranty is limited to repair or replacement (with a product of equal value), provided the claim is made to an authorized dealer or directly to WETSTYLE within the warranty period. Labour costs and any other expenses entailed by replacement of a WETSTYLE product are not covered by the warranty.

WETSTYLE products are certified CSA B45.0, CSA B45.4, ANSI Z124.1 and ANSI A124.3.



www.WETSTYLE.CA - Montreal - Canada  
Tel. 450.536.9000 - 1 888.536.9001 - Fax. 450.536.0202